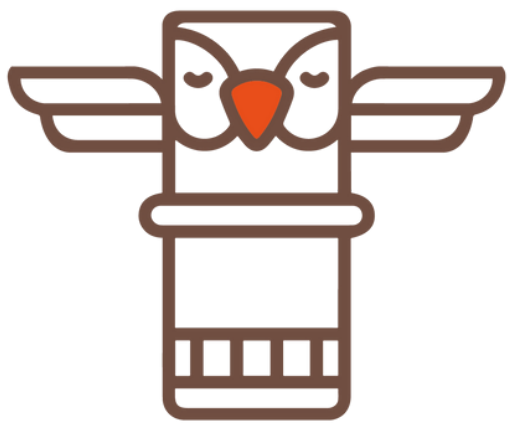
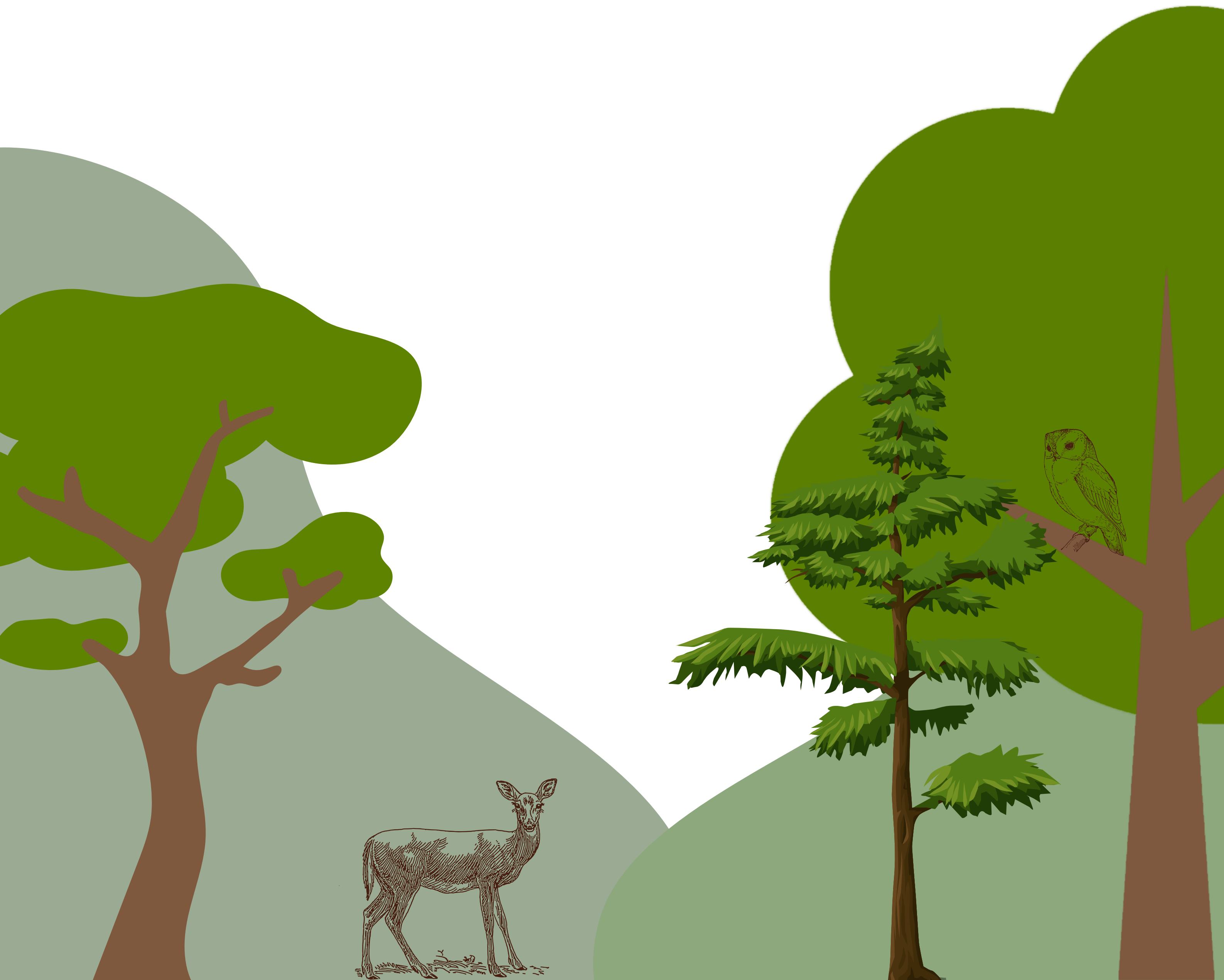


Touristic activities



# FORÊT TOTEM

S L O W T O U R I S M E



# Touristic activities

**In keeping with the spirit of our place, we offer you a selection of places in the vicinity of Forêt Totem, within 1 hour's drive.** This list is far from being exhaustive, you will undoubtedly make other discoveries in the area!

We recommend the very friendly Lorient tourism website:

<https://www.lorientbretagnesudtourisme.fr/fr/>

and that of the Pays du Roi Morvan, of which Persquen is a part:

<https://www.tourismepaysroimorvan.com/>

You will also find a local map with the main points of interest in your gîte.

## Various local activities

### **Aquanature Park (20km), Priziac.**

140 deer, 80 ha to explore by golf cart!

### **Poul Fetan (20km), Quistinic.**

Spend a day in a 19th century working class village. A truly interactive and authentic experience!

### **La Balade du Père Nicolas (25km), Plumeliau.**

Animals, pedal go-karts, train, tubing and more...

### **Les Terres de Nataé (30km), near Lorient.**

A revisited animal park where the protection of endangered species is a priority.

**The Napoleon Express train** is back in service, from Pontivy (30 min), every Wednesday and Sunday this summer. Reservations on the website [www.cfcb-asso.org](http://www.cfcb-asso.org)

## Hiking

On the *Coeur de Bretagne* website or on the *Rando Bretagne Sud* application, you can download the routes. We can also print out these sheets for you.

- Circuit (departure on foot) for the round St Vincent / Le Pénéty (6 km).
- Circuit du Scorff (departure 5 min by car), very pleasant (12 km).
- Circuit du meunier, easy in Langoëlan (15 min by car), 8 km.
- Circuit de Crénéan, in Ploerdut (15 min) for a 10 km tour.
- Circuit for more experienced hikers of 17 km in the forest estate of Pont-Kalleg (20 min by car).
- The lake of Guerlandan (50 min) is also a place rich in walks, with the possibility of swimming.

## Cultural heritage / museums

**Bat Museum in Kernascleden** (15 min by car).

To discover these "damsels of the night", the ecomuseum offers a fun tour that combines science, humour and imagination.

**Cité de la Voile Eric Tabarly** (36km) Lorient.

Good on a rainy day. The whole world of sailing, a very friendly place.

**Musée de la Compagnie des Indes** (42km) Port-Louis.

Vauban citadel and museum. Exceptional panorama of the harbour.

**Abbaye de Bon repos, on the Canal de Nantes à Brest, at the Blavet (50 min).**

**Château de Kerguéhennec, Bignan** (50 min).

Natural area, historical site and park and exhibition venue.

**Chapels St Fiacre and Sainte Barbe**, 30 km, towards le Faouët (30 min).

Small remarkable chapels to discover!

## The coastline and its beaches

**Le Pouldu (40 min)**, the beach of Grands Sables, at the seaside with a view on La Laita and its isolated sandy creeks, or towards the beach of Grands Sables, wilder and bigger.

**Larmor Plage (40 min), 3 beaches:** Kerguelen (bar-restaurant Les Mouettes and water sports club), Port Maria, Toulhars (close to the centre, family atmosphere). Beach in the heart of the town (with bars and restaurants) or to the north, on the coastal path, towards wilder areas.

**Guidel-Plages (40 min)**, la Falais, le Loc'h (more sporty atmosphere, surfing) and Pen er Malo. Large stretches of sand as far as the eye can see (bars and restaurants in the heart of the town).

**Anse de Rospico, Port Manec'h beach, near Nevez (50 min)**, small beach for children, seasonal café.

### in the area....

**Groix (45 min Lorient, then 45 min boat ride).**

Groix is a few kilometres from the coast of Lorient. There are several ferries per day between Lorient and Groix, (about 30 € return/adult). Groix has the only convex beach in Europe.

**Doëlan (44km)** Picturesque fishing port; divided in two by the Doëlan cove - left bank and right bank - like in Paris. Restaurants on the port. Possibility to buy the day's catch directly from the small trawlers. Distinctive lighthouses. Coastal walks along the GR34. Small beach at Porz Stancou

**St Cado - Belz (1h00).** Islet in the ria d'Étel with picturesque cottages, chapel, fountain, calvary, small coastal path and oyster beds; accessed by an ancient 100m road/arch bridge.

**Quimperlé (40 mins).** Small town located at the confluence of three rivers: the Ellé, the Isole and the Laïta. In the upper town, as in the lower town, Quimperlé has preserved many traces of the past, from the Middle Ages to the 19th century.

**GOOD VISIT!**